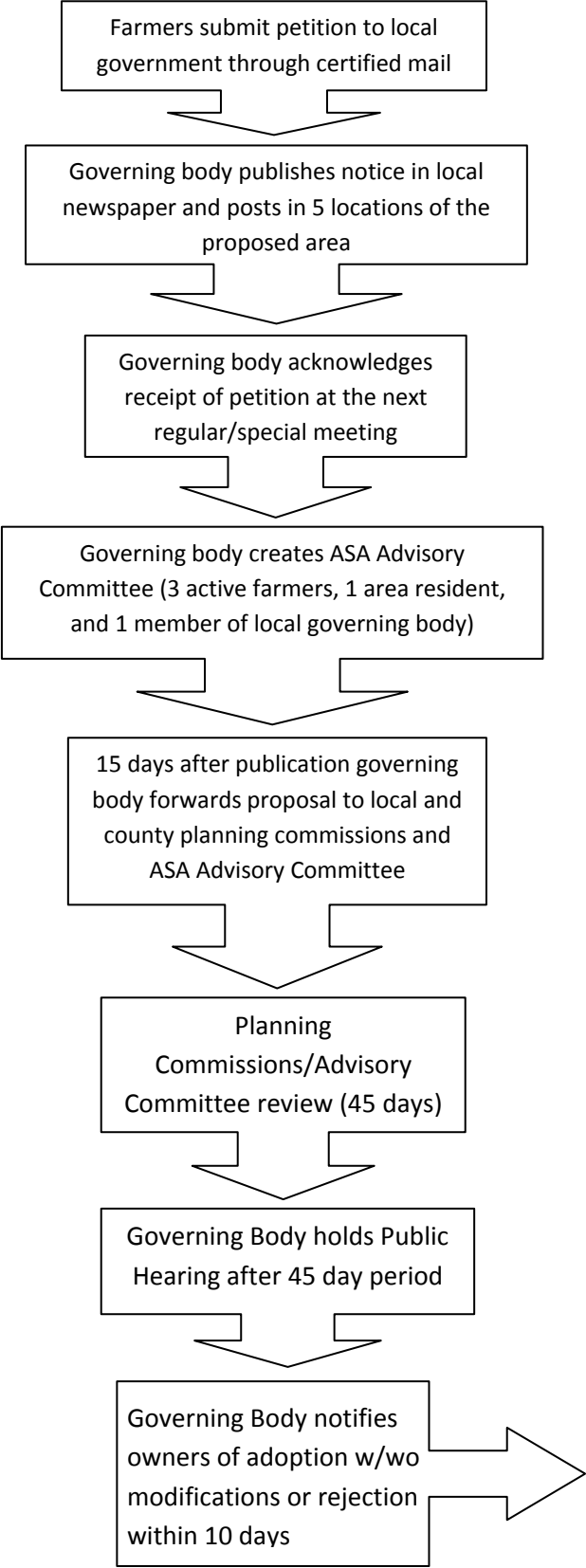


## CREATION OF AN AGRICULTURAL SECURITY AREA (ASA)



- Within 10 days of the creation of the ASA Governing Body files information with the Recorder of Deeds, County Planning Commission and Local Planning Commission.
- Within 10 days of recording Governing Body must notify the Secretary of Agriculture in writing the ASA has been created, provide landowner names, acres, date of governing body approval, date of recording, and copy of the recording document with book and page number.